

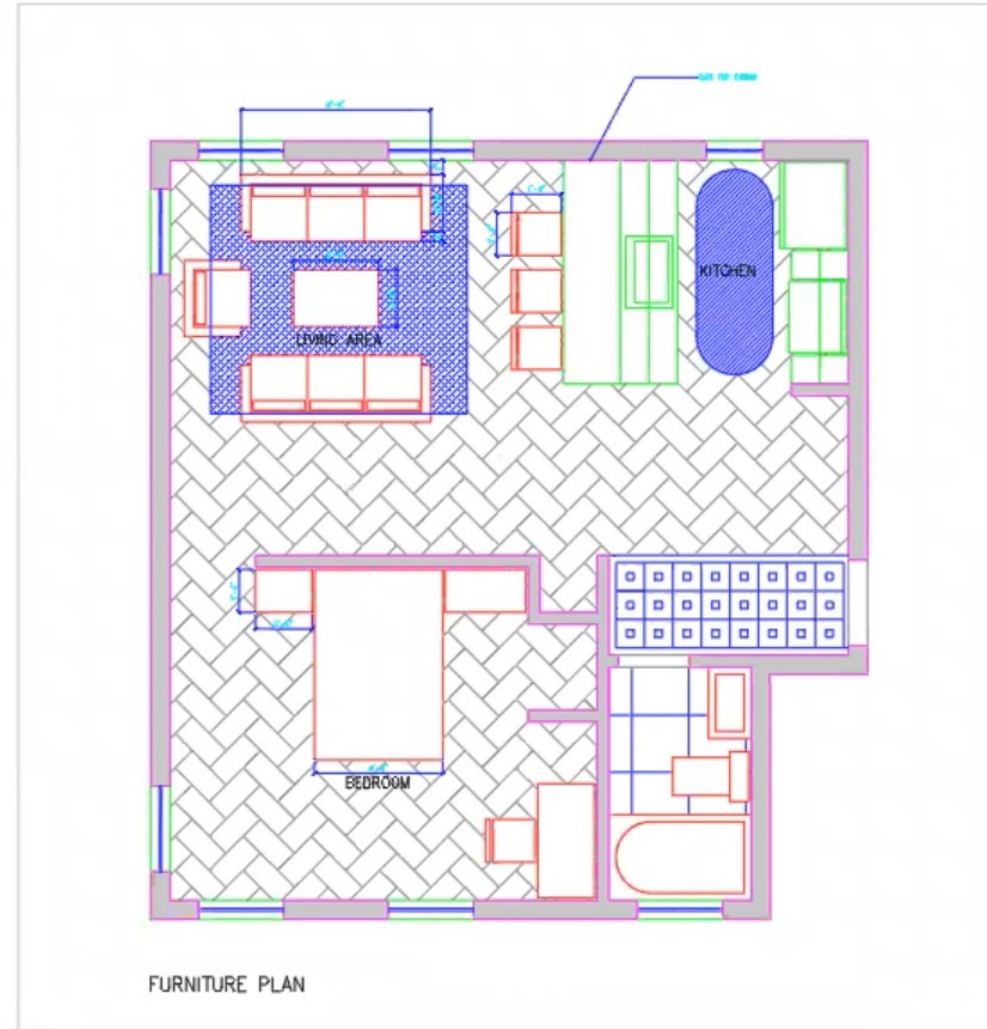
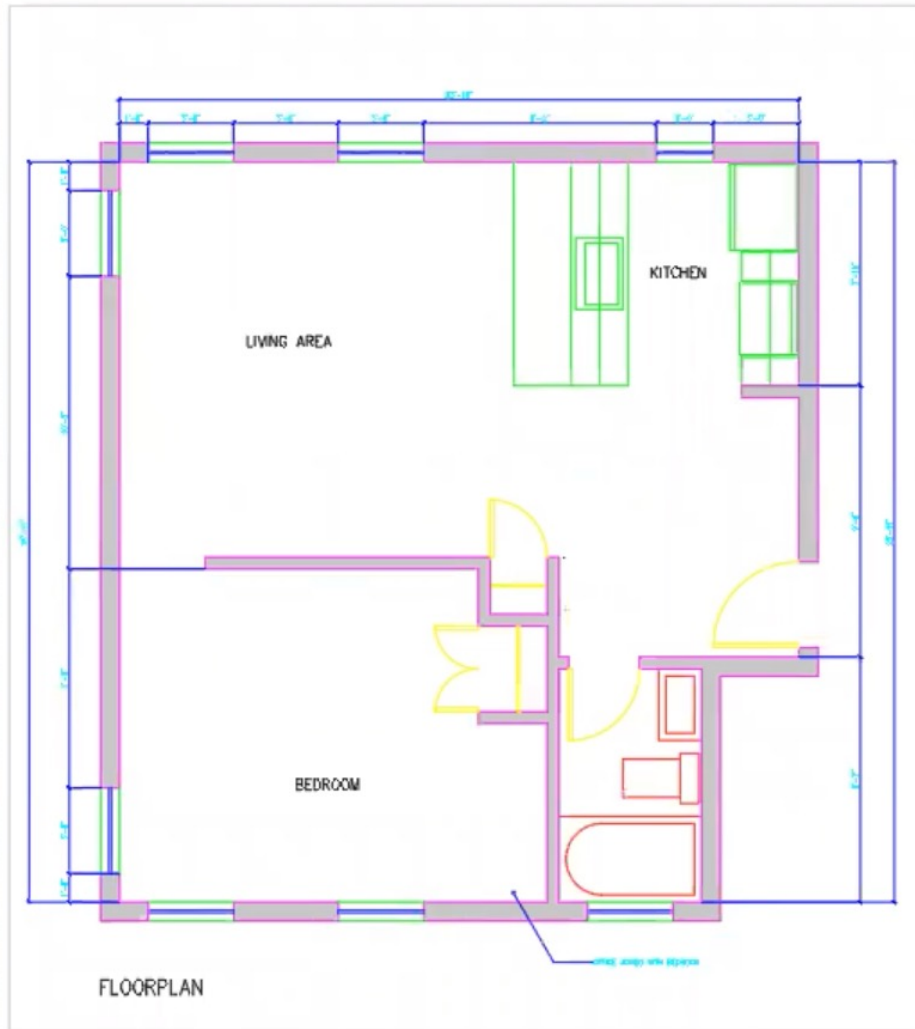
# AUTOCAD

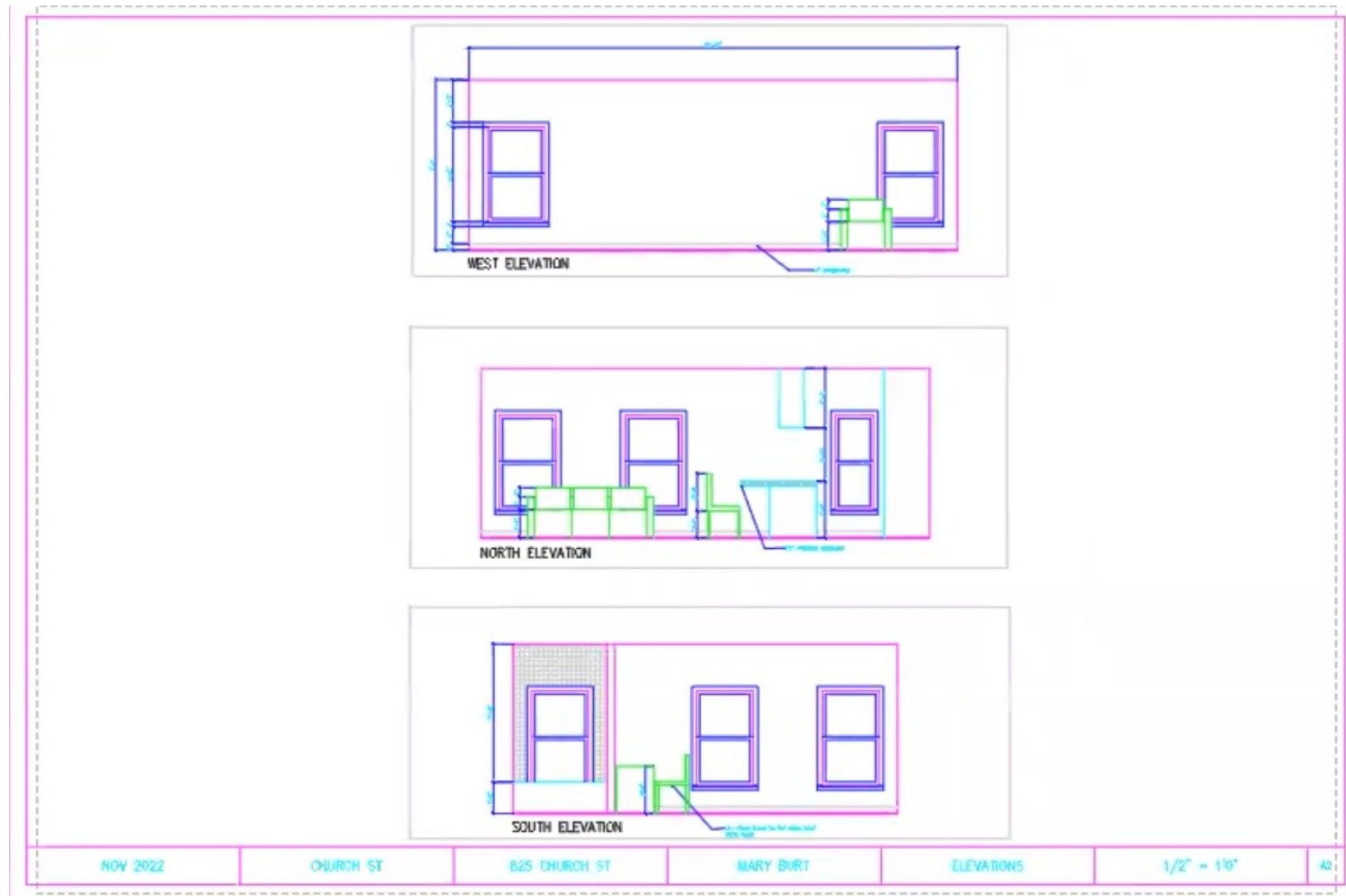
## Final Project

*\*This was an oral presentation and shared through an AutoCAD screen recording (video file). For accessibility purposes, I have put screen shots of my AutoCAD files into this pdf presentation format\**

# AutoCAD Final Project: Apartment Workspace View

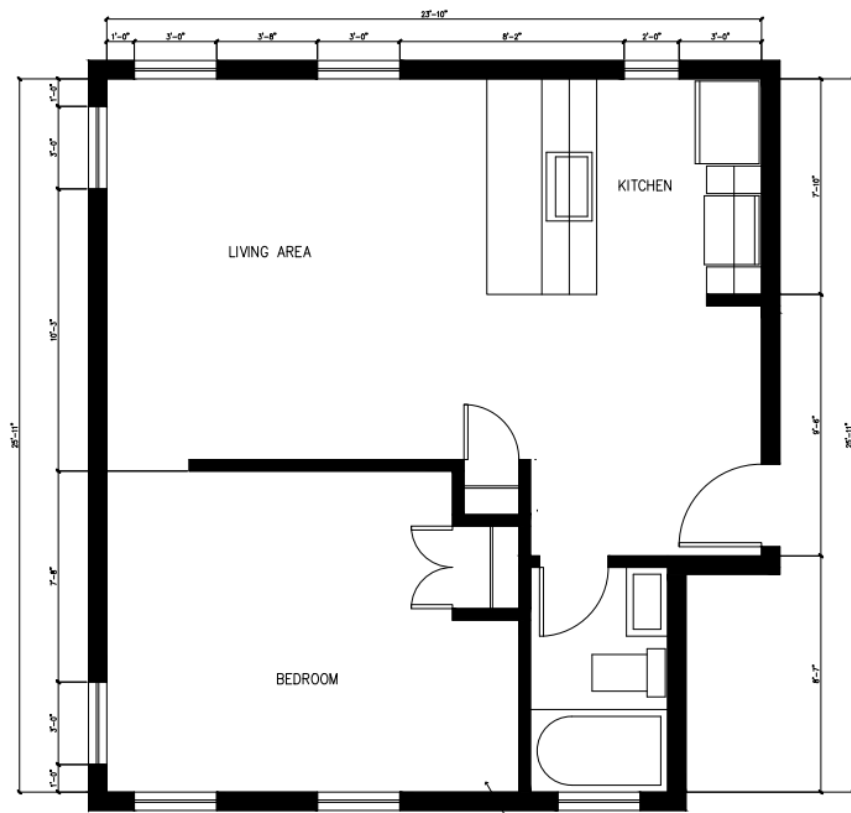




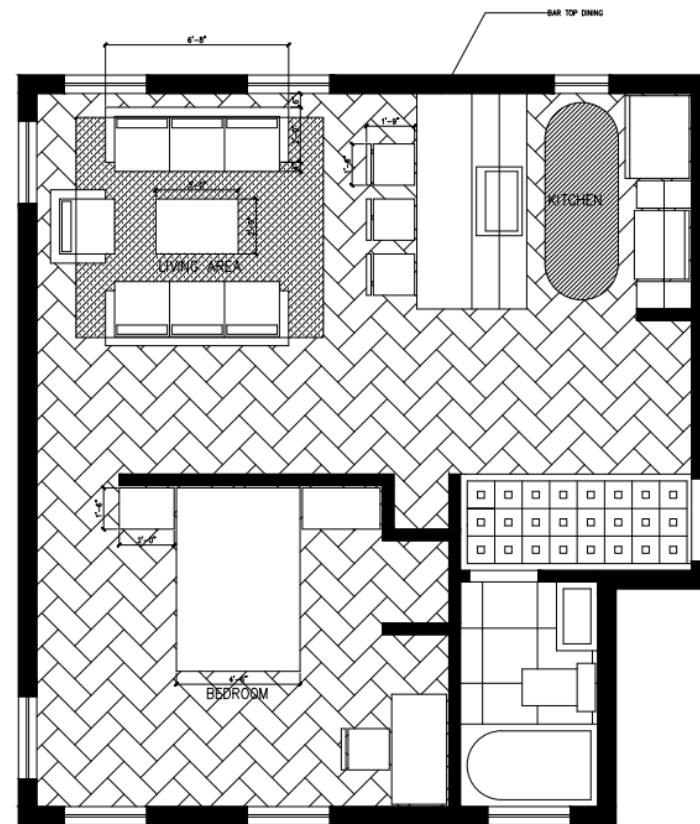


The floor plan shows a rectangular house with the following layout and dimensions:

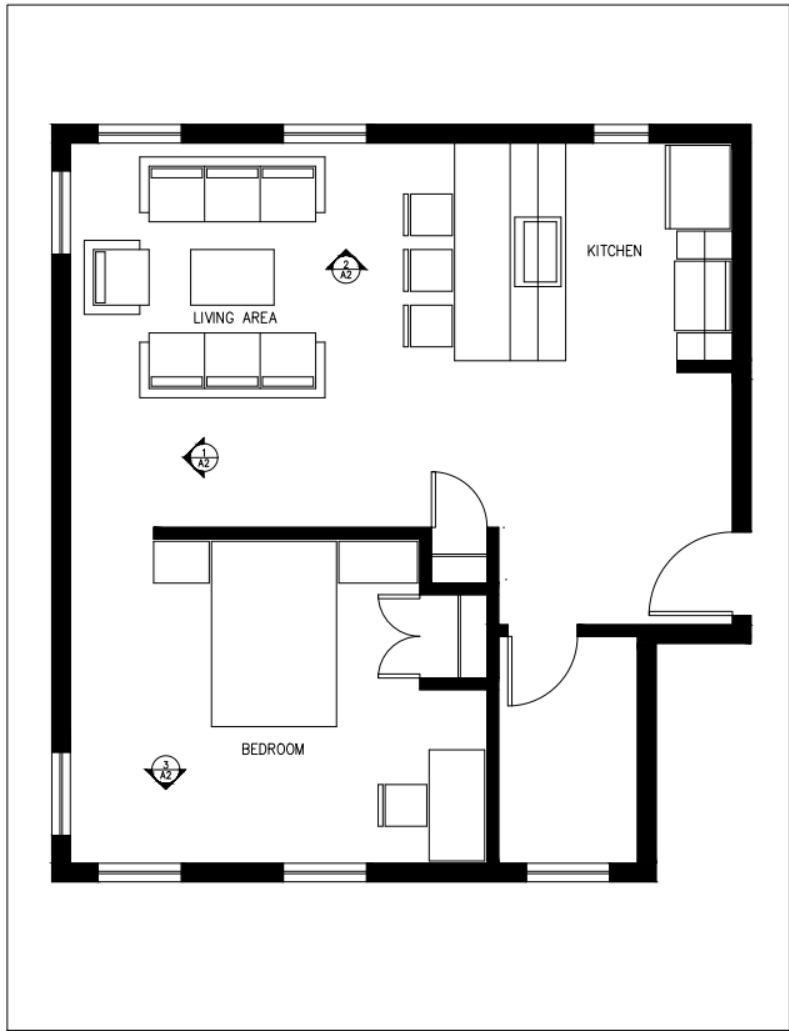
- Overall Dimensions:** 12'-0" wide by 12'-0" deep.
- Living Area:** Located in the top-left corner, measuring 6'-0" wide by 6'-0" deep. It contains a circular feature labeled "LIVING AREA".
- Kitchen:** Located in the top-right corner, measuring 6'-0" wide by 6'-0" deep. It contains a circular feature labeled "KITCHEN".
- Bedroom:** Located in the bottom-left corner, measuring 6'-0" wide by 6'-0" deep. It contains a circular feature labeled "BEDROOM".
- Central Hallway:** A central hallway measuring 6'-0" wide by 6'-0" deep, connecting the three main rooms.
- Dimensions:**
  - Overall width: 12'-0"
  - Overall depth: 12'-0"
  - Living Area width: 6'-0"
  - Living Area depth: 6'-0"
  - Kitchen width: 6'-0"
  - Kitchen depth: 6'-0"
  - Bedroom width: 6'-0"
  - Bedroom depth: 6'-0"
  - Central Hallway width: 6'-0"
  - Central Hallway depth: 6'-0"
- Notes:**
  - "CLOSED WITH SHUTTERING FRAME" (pointing to the Living Area)
  - "CLOSED WITH SHUTTERING FRAME" (pointing to the Kitchen)
  - "CLOSED WITH SHUTTERING FRAME" (pointing to the Bedroom)
  - "DOOR SWING" (pointing to the door between the Living Area and the Central Hallway)



FLOORPLAN

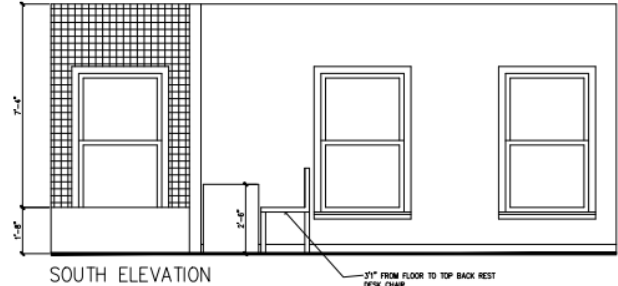
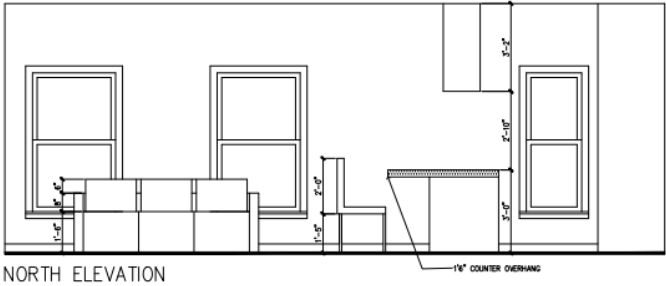
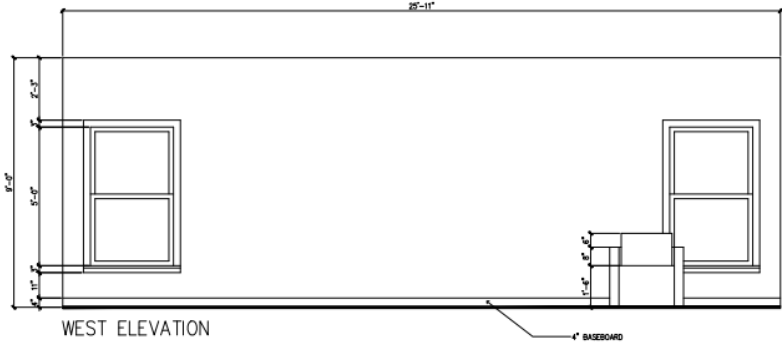


FURNITURE PLAN





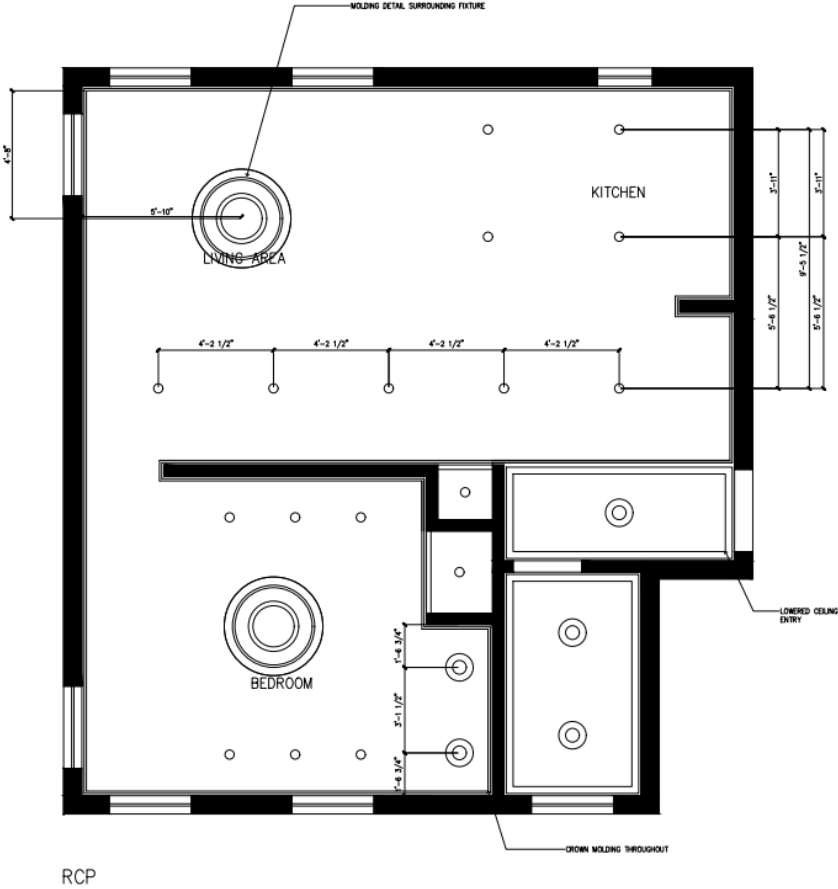
# AutoCAD Final Project: Apartment Elevation Presentation View



NOV 2022	CHURCH ST	825 CHURCH ST	MARY BURT	ELEVATIONS	1/2" = 1'0"
----------	-----------	---------------	-----------	------------	-------------



# AutoCAD Final Project: Apartment RCP Presentation View



NOV. 2022	CHURCH ST.	825 CHURCH ST.	MARY BURT	RCP	1/2"=1'0"
-----------	------------	----------------	-----------	-----	-----------

